



ESTIMATED COST FOR SERVICES

Confidential Information for Foundation Solutions use only.

October 13, 2010

Darryl Curley
dcurley@geometrics.com
408-428-4293

RE: 1468 Mercury Court, Milpitas, CA

The following remedies are recommended to enhance the future performance of your foundation. We feel an obligation to inform you of potential problems if these items are not corrected

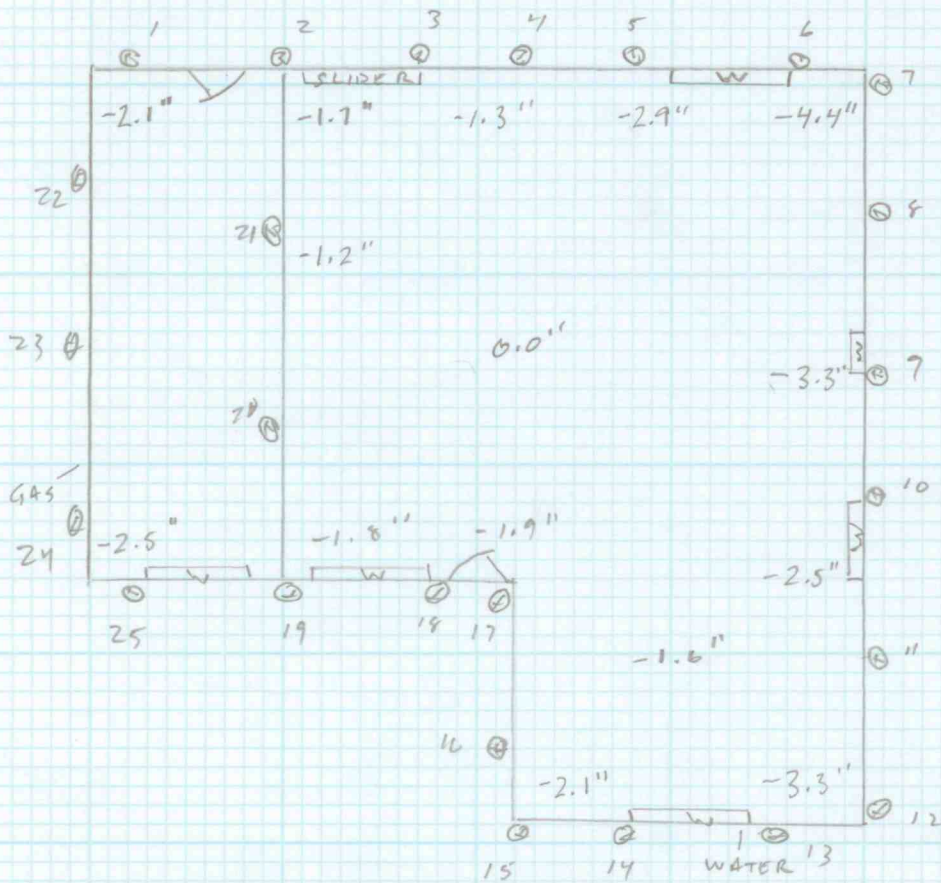
Table with 4 columns: Services, No. of Piers, Cost Per Pier, Service Amount. Rows include Steel Piers, concrete flat work, interior slab, footing cracks, slab cracks, Foundation Solutions Services, and Sub-Services.

In the event utility or plumbing lines need to be repaired or relocated this will be performed by others or at the homeowner's expense. This proposal does not include any removal or replacement of floor coverings or any cosmetic repairs.



1468 MERCURY COURT
MILPITAS, CA

OCT., 2010



DARRYL CURLEY
dcurley@geometrics.com
408-428-4293

LEGEND
1" = 10'
W = WINDOW
0.0" = MANOMETER ELEVATION